

MONTHLY MEMBERSHIP PROGRESS REPORT

LOCATION SOUTH DAKOTA

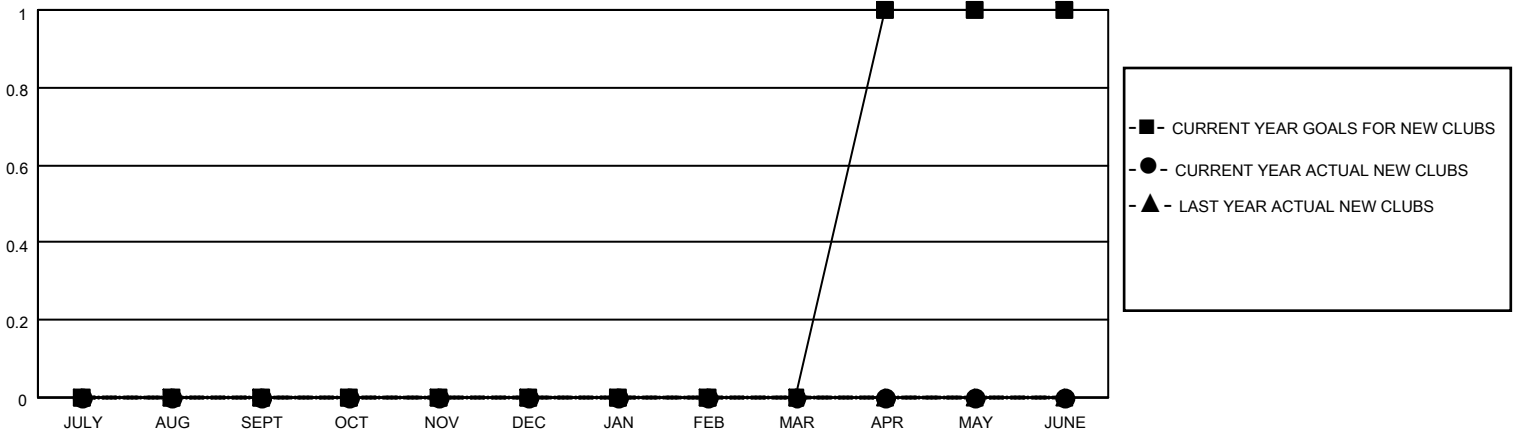
District 5 SW

Results as of: 4/30/2021

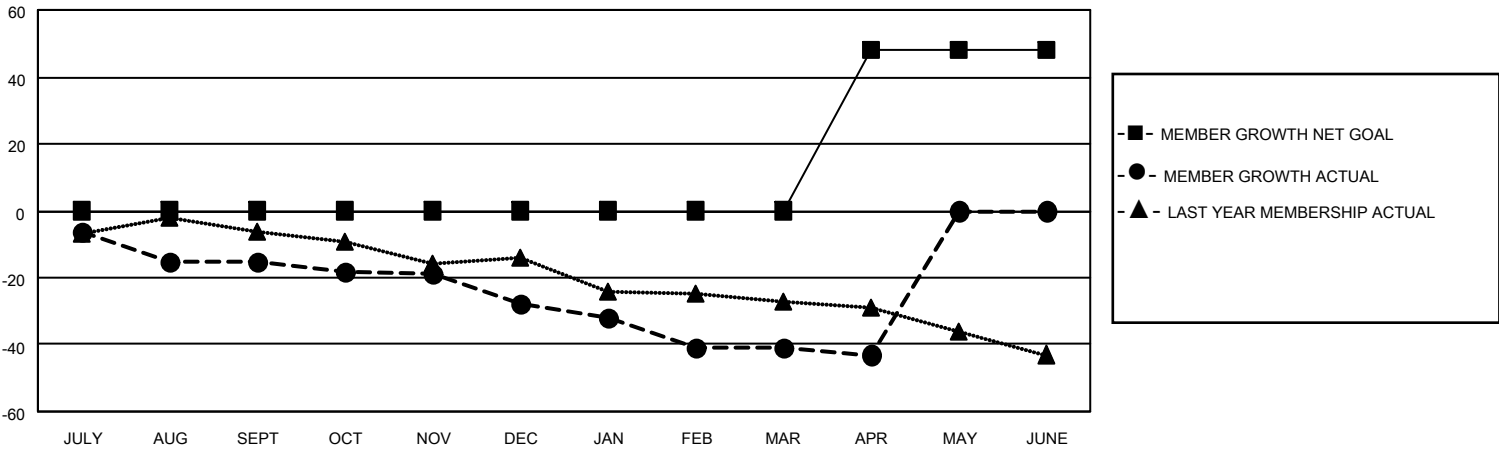
Clubs			
RESULTS FOR 2020-2021			
QUARTER	NEW CLUB GOAL	NEW CLUBS	DROPPED CLUBS
JULY/AUG/SEPT	0	0	0
OCT/NOV/DEC	0	0	0
JAN/FEB/MAR	0	0	2
APR/MAY/JUNE	1	0	0

Members			
RESULTS FOR 2020-2021			
QUARTER	MEMBER GROWTH NET GOAL	MEMBER GROWTH ACTUAL	DROPPED MEMBERS ACTUAL (including transfers)
JULY/AUG/SEPT	0	2	17
OCT/NOV/DEC	0	17	29
JAN/FEB/MAR	0	6	19
APR/MAY/JUNE	48	3	4

GOALS AND ACTUAL NEW CLUBS CUMULATIVE



GOALS AND ACTUAL MEMBERS CUMULATIVE



DROPPED CLUBS: 2	11 CLUBS OF 33 ADDED 1 OR MORE NEW MEMBERS	<u>GENDER DISTRIBUTION</u> MALE 504 (73.47%) FEMALE 182 (26.53%)
<u>DROPPED MEMBERS</u> DECEASED 13 CLUB CANCELLED 10 OTHER 46 <hr/> TOTAL 69	CLICK HERE FOR CUMULATIVE MEMBERSHIP DATA	TOTAL FAMILY UNIT MEMBERS 102 FAMILY MEMBERS PAYING HALF DUES 52